

# Ruth's Table

## ***Building Bridges: Breaking Barriers*** **Part Two**

**Online Viewing Room**  
**March 18 - May 13, 2021**

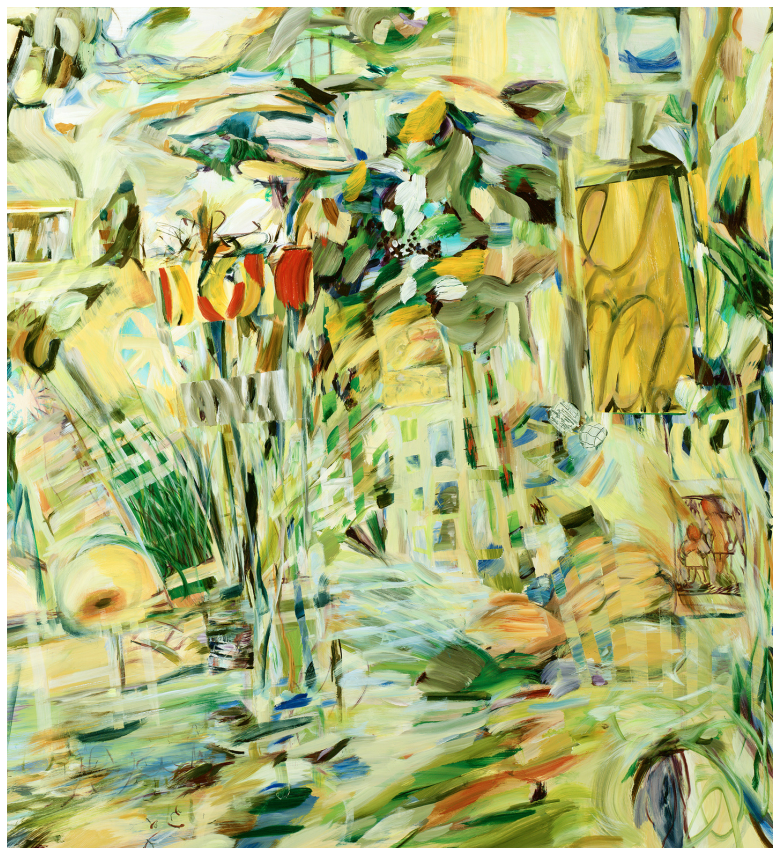
**Curator:** Hanna Regev

### **Featured Artists:**

Lia Cook  
Naomie Kremer  
Teddy Milder  
Francesca Pastine  
Mary Curtis Ratcliff  
Elizabeth Sher

### **Image:**

Naomie Kremer, *From Memory*, 2003



*Building Bridges, Breaking Barriers* exhibition is a call for attention and an attempt to address the profound issue of ageism engrained in our society.

The existing biases of ageism are profound and represent a deeply entrenched cultural problem. New research reveals that over 80 percent of Americans who are 50 and older say they have experienced prejudice, discrimination and stereotyping based on their age.\* The COVID-19 pandemic, which disproportionately affected older adults' lives and livelihoods, not only helped unmask, but negatively fueled this already existing ageist sentiment, promoting the troubling narrative about the value of older adults in our society. From media coverage to mandates, to public policy and health-care decision-making, the older adult population is portrayed as uniformly weaker, less valued, unable to contribute to society.

This two-part exhibition series aims to help break barriers in perception by recognizing the unique agility and skill possessed by professional older artists at the pinnacle of their careers, their continued value and contribution to the arts and society.



## Ruth's Table

The exhibition highlights artists who are particularly notable for their ability to transform their oeuvre in the thick of their careers. Each of artists displays a selection of works that represent evolution and, sometimes, rupture from earlier works - much like the way Philip Guston's career underwent a transformation from abstract expressionism to trenchant works of social commentary that became his defining style.

The work presented in the exhibition is vibrant, cutting-edge, and important, regardless of the artist's age. Among them are *Naomie Kremer's* hybrid paintings, which marry motion and stillness through painting and video projection, an example of innovative use of technology and artistic expertise. *Lia Cook*, who has been on groundbreaking path for years, collaborates with neuroscientists to explore emotional responses to interacting with the work, and then uses the images of neuronal connections in the brain made visible through Diffusion Spectrum Imaging and integrates them into actual fiber connections when creating her woven image.

All 12 artists in the exhibition demonstrate a compelling ability to take risks, break stereotypes and shape attitudes through their practice, proving that curiosity, unbound imagination, and inventiveness are defining characteristics that only come with age.

Paying particular attention to the issue of ageism, this exhibition explores the themes of breaking barriers and building bridges, in our lives and communities. How do we reinvent ourselves through a lifetime? What type of barriers, physical and metaphorical, do we break along the way? Can we break barriers, or walls, that can help pave the way to building bridges that are multidisciplinary, intergenerational and multicultural? When dealing with issues of ageism, can art change our mind and perception? This exhibition is an invitation to have a meaningful and creative conversation that puts forth a goal of building bridges, the ones that can unite us in a common cause.

### **Social Media:**

[facebook.com/ruthstablesf](https://facebook.com/ruthstablesf)  
[instagram.com/ruthstablesf](https://instagram.com/ruthstablesf)

For all inquiries, contact  
+1 415-621-1000 [contact@ruthstable.org](mailto:contact@ruthstable.org) [www.ruthstable.org](http://www.ruthstable.org)  
*Ruth's Table is a program of Covia* [www.covia.org](http://www.covia.org)